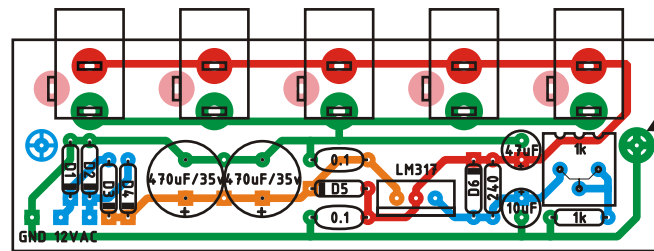


ADJUSTABLE PEDALBOARD POWER

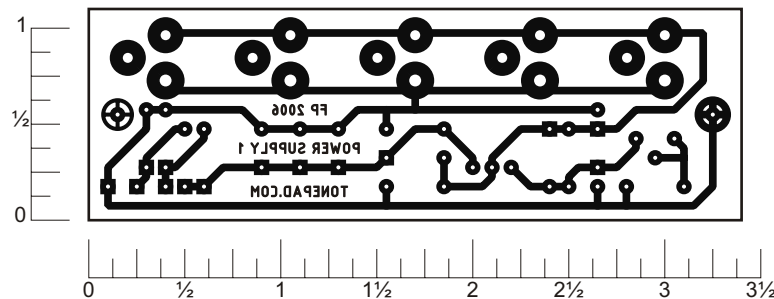
Rev.1.Nov.26.2006

Circuit based on the LM317 variable voltage regulator application notes. It will provide regulated and filtered voltage between ~7 and ~12 volts for powering pedals. All outputs are in parallel at the same voltage. Chassis should be metal and grounded in one point. The tab of the LM317 voltage regulator is internally connected to Vout, DO NOT connect it to ground. Use a small heatsink on the regulator. You can use a single 1000uF capacitor instead of the two 470uF. Visit www.tonepad.com for more!

Drill template: 0.65"



LAYOUT



READY TO TRANSFER

Parts List

Resistors

- 1 - 240ohm
- 1 - 1k
- 1 - 1k trim

Capacitors

- 2 - 470uF
- 1 - 10uF
- 1 - 47uF
- 2 - 0.1uF

Other

- D1-6 - 1N4002
- IC1 - LM317 w/heatsink
- 5 - DC Jacks
- (mouser 163-5004, 16PJ031 or similar)
- 1 - 12VAC transformer

Schematic

